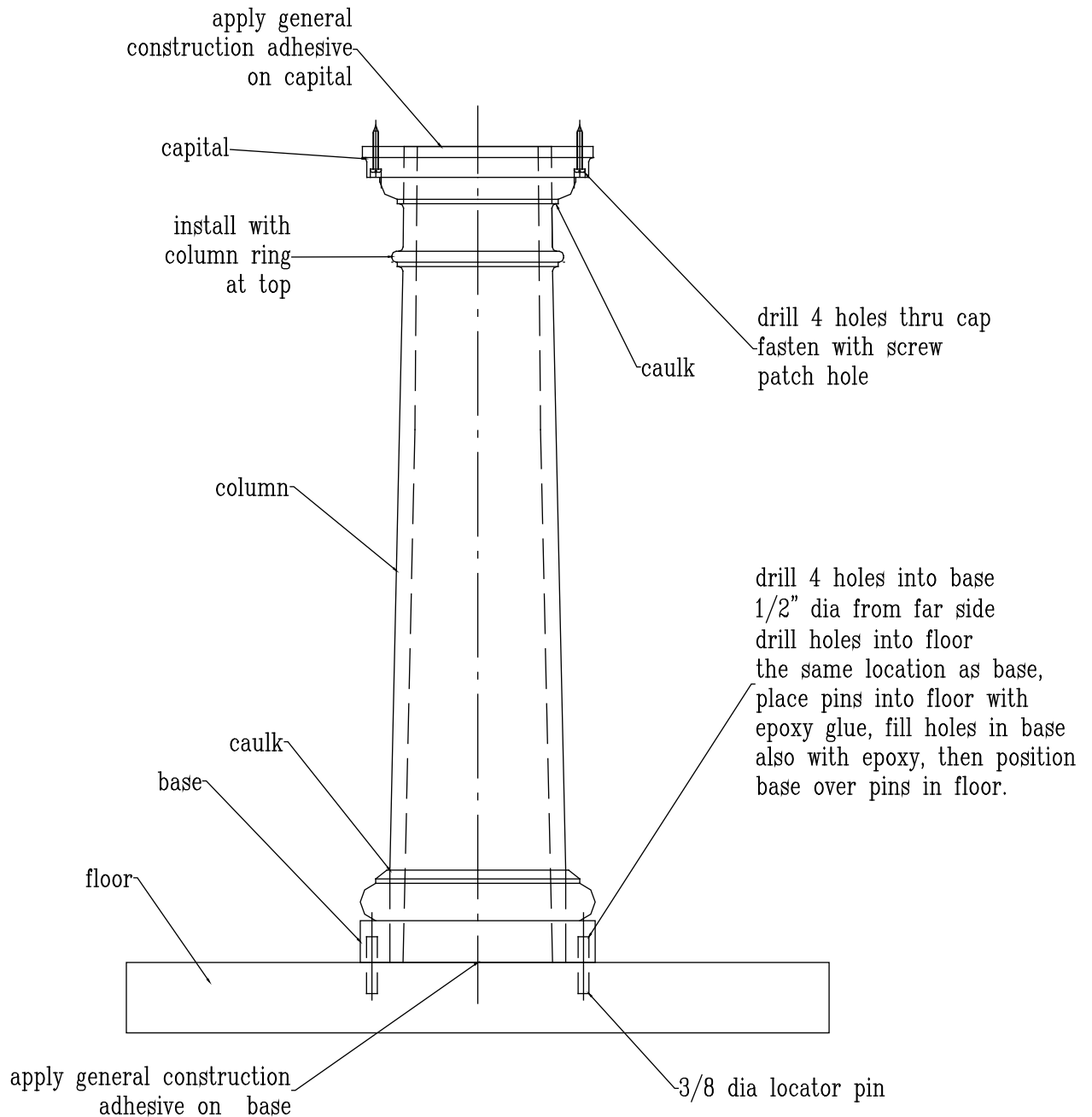


COLUMN INSTALLATION INSTRUCTIONS



Note: Read this entire instruction manual before assembly!

Important: Handle pre-finished column with care.

Do not remove plastic wrap until after installation.

Cleaning: Use tilex or equivalent to clean columns

Column Alteration: Use carbide tipped blade to cut column

DRAWING NO.: —	PART WEIGHT: —	Architectural Mall Inc. 17 W. 300 22nd Street 2nd Floor Oakbrook Terrace, IL 60181 TEL: 877-279-9993 FAX: 630-279-9994	DRAW SCALE: —	PRINT SCALE: —
PART NAME: Column Installation Manual			DATE: 1-01-98	REVISION: 0